

**Kawasaki Brute Force 750
Winch Mount Kit
MA11936**



23001 Industrial Blvd Rogers, MN 55374

HARDWARE FOR WINCH MOUNT KIT

- | | |
|--|---|
| (2) 5/16-18 x 1 1/8" x 1 3/4" U-bolt (42012) | (2) 5/16-18 x 1 1/2" x 2 3/16" U-bolt (42021) |
| (8) 5/16" Flat Washer | (8) 5/16-18 Lock Nut |

Electrical conduit (not supplied)

**Hex nuts attached to end of large u-bolt (42021) are unnecessary and came from Fastenal in this way. Please disregard.

WINCH INSTALLATION

1. Loosen the front bottom skid plate by removing the front two 6mm bolts, Figure 1. Keep the 6mm bolts for reinstallation of the skid plate. Skid plate will not be removed from vehicle, only will be rotated down. This will allow room for winch plate installation.
2. Place winch mounting plate sideways in between the front tube guards and vehicle frame, Figure 2.
3. Rotate winch mounting plate, Figure 3. Tilt winch mount forward by raising rear face such that the front right corner clears the front tube guard, Figure 3.
4. Rotate the mounting plate into location, Figure 4. Center the plate between the two front tube guards.
5. Attach the mounting plate by sliding the supplied 5/16" U-bolts and around the tubes and through the plate, Figure 5. Fasten the U-bolts with the supplied washers and nuts, ensuring that the plate sits flush against the front and rear contact surfaces.
6. Install winch from the left side of the vehicle, as sitting on the vehicle, Figure 6. Fasten winch with the supplied four 5/16" bolts and lock washers supplied with the winch. Mount the winch so that the motor faces the right side of the vehicle. Also attach roller fairlead to the winch mounting plate, Figure 6, using two 3/8" diameter bolts, nuts and lock washers, provided in the winch kit.
7. Switch the winch clutch to freespool. Manually feed the winch cable through the roller fairlead. Attach the clevis hook to the end cable loop, Figure 7. Reinstall front skid plate with original hardware from step 1 and securely tighten.
8. Complete the winch installation as described in the winch installation and specification guide that came with the winch.

ELECTRICAL SPECIFICS

1. Contactor Location

Mount your contactor in a secure and dry location if at all possible. Wire according to the winch instruction manual and ensure that all connection points are securely fastened.

2. Handlebar Switch Installation

Mount the switch in the location shown in Figure 9. The recommended location is on top of the left side of the handlebars.

3. Wiring Installation

a. Connect the yellow and blue electrical cables to the contactor, Figure 8. Route the winch wires from the contactor to the front of the ATV, Figure 10. Place the motor terminal boots, supplied in the mounting kit, onto the electrical cables. Attach the wires to the matching motor terminals on the winch. Slide the motor terminal boots over the motor terminals. Use cable ties to secure all electrical cables to the ATV frame. Avoid all moving and potentially hot components of the ATV when routing the electrical cables.

b. Remove the battery cover shown in Figure 13.

c. Route battery electrical cable from the contactor to the battery, along the inside of the ATV frame as seen in Figure 11.

**Kawasaki Brute Force 750
Winch Mount Kit
MA11936**



23001 Industrial Blvd Rogers, MN 55374

- d. When routing battery electrical cables from the contactor to the battery, there is an access hole on each side of the ATV frame where the seat latches, Figure 12. Use this access hole to route the electrical cable to the battery
- e. Continue to route the battery electrical cables exactly as seen in Figure 11. The electrical cables must protrude through the frame cross member that has holes through the side of it, Figure 11,12 and 13. Purchase plastic electrical cable conduit and place over the cable area that routes through the ATV cross member frame, Figure 13 and Figure 14. Secure the electrical cable conduit with electrical tape.
- f. Use cable ties, supplied in the mounting kit, to secure all electrical cables to the ATV frame. Avoid all moving and potentially hot components of the ATV when routing the electrical cables. Avoid areas where the wiring could be pinched when components are reinstalled (such as the seat).
- g. Attach wire to the positive contactor post and battery positive terminal, Figure 8 and Figure 13. Attach the negative wire to the contactor post and battery negative terminal, Figure 8 and Figure 13. Reposition the protective boot over the positive battery terminal. *Note: The positive battery electrical cable must be routed on the front side of the battery, Figure 13. This will allow enough room to reinstall the battery hold down cover.*
- h. Reinstall the battery cover and securely tighten fasteners.

*For full color photos of these same pictures, please visit our download page at: <http://motoalliance.com/index.cfm/pageid/261>



Figure 1 Loosen Front Skid Plate



Figure 2 Install Winch Mounting Plate

**Kawasaki Brute Force 750
Winch Mount Kit
MA11936**



23001 Industrial Blvd Rogers, MN 55374

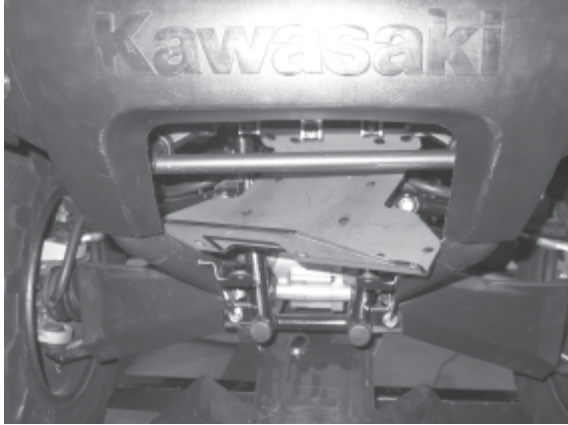


Figure 3 Rear Support Mount Bracket

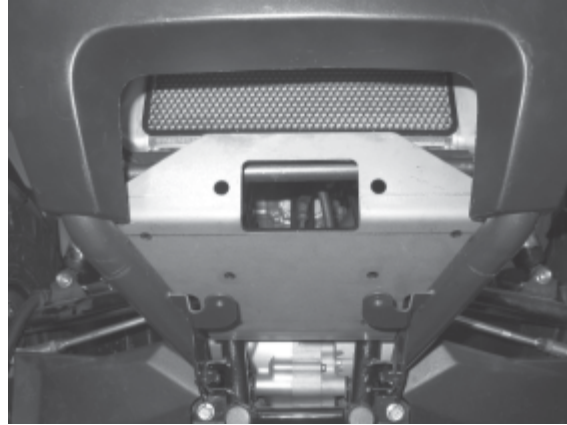


Figure 4 Place Winch Mounting Plate into Location

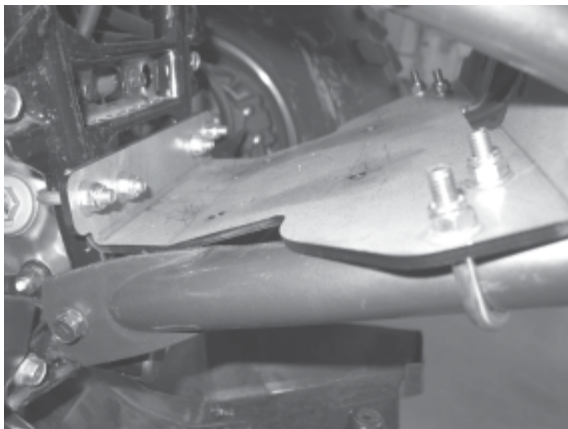


Figure 5 Fasten Winch Mounting Plate



Figure 6 Install Winch and Roller Fairlead

**Kawasaki Brute Force 750
Winch Mount Kit
MA11936**



23001 Industrial Blvd Rogers, MN 55374

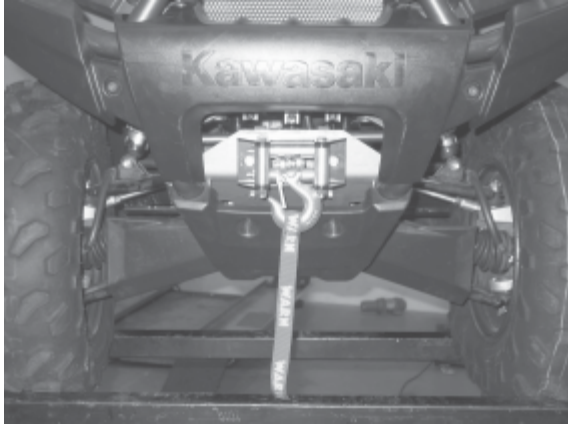


Figure 7 Complete Winch Installation

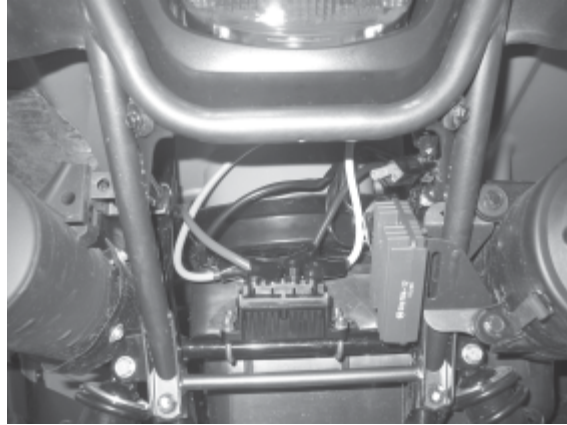


Figure 8 Contactor Location



Figure 9 Switch Location

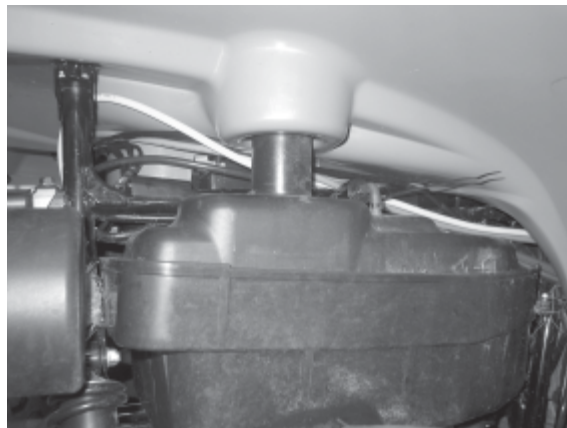


Figure 10 Route Electrical Cables to Winch

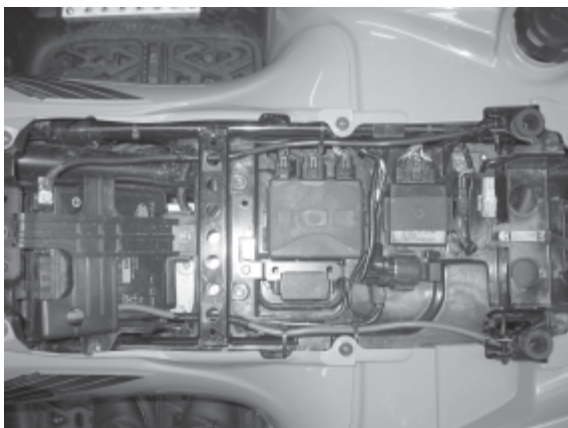


Figure 11 Route Electrical Cables to Battery
866.527.7637 (toll free)



Figure 12 Route Electrical Cables to Battery

**Kawasaki Brute Force 750
Winch Mount Kit
MA11936**



23001 Industrial Blvd Rogers, MN 55374

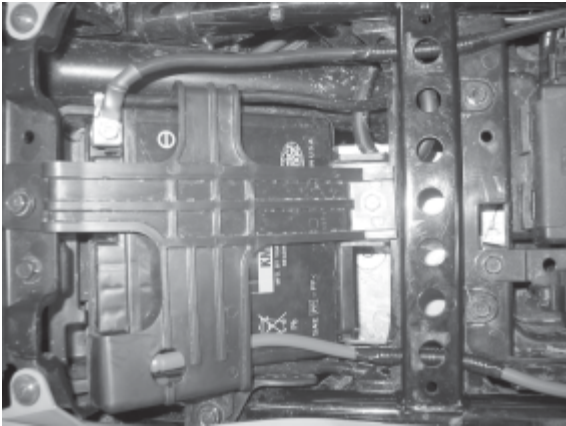


Figure 13 Route Electrical Cable to Winch

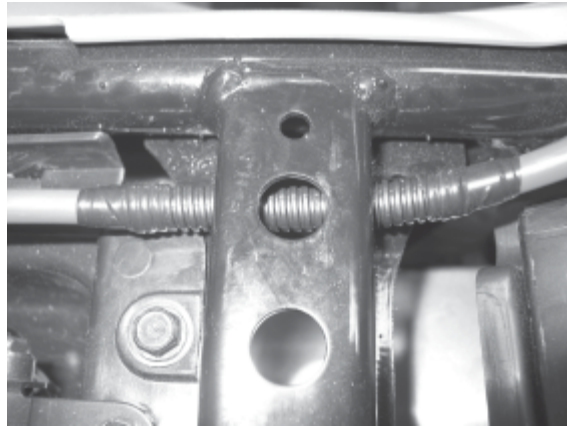


Figure 14 Place Electrical Plastic Conduit onto EACH Cable